

"固定用底盤"及"鋼管"之製作說明:

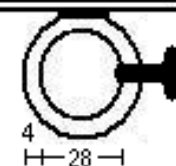
- (1) 請自行製作一個"固定用底盤", 厚度>1.5mm, 如圖2, 並焊接一夾頭於中心位置, 如圖3.
- (2) 該夾頭之厚度至少4mm, 方便焊接"固定用底盤", 也方便鑽孔攻5mm牙, 讓5mm螺絲可以迫緊並架設於25mm直徑之鋼管.
- (3) 前述之25mm直徑鋼管, 或稱鋼管單槓, 必須預先固定於被測機械之支柱上, 橫跨於被品檢之膜面前方.

整體組合與架設之說明:

- (1) 利用PK-DS-170原有底盤上之攻牙孔, 以3mm螺絲串接"固定用底盤"鎖緊. 也可以將該3mm螺絲孔, 沖出更大的孔, 再以適當的螺絲及螺絲母, 相互鎖緊串接起來.
- (2) 藉由夾頭套入機械上之25mm直徑鋼管, 左右移動於適當之位置後, 再以夾頭上之5mm螺絲迫緊於該鋼管上. 至此, 架設全部完成.
- (3) 一般而言, 該鋼管單槓之正確架設位置, 是距離被品檢膜面之300~450mm遠為佳.

(DIAGRAM 3 圖3)

"固定用底盤"之側視圖
Side-view of Mounting Plate



夾頭長度 Length: 70mm

70mm之夾頭上沖孔2處, 攻5mm牙, 用於迫緊內層鋼管
Drill 2 holes for 5mm screws to tighten with Inner Steel Pipe

Ways to mount PK-DS-170 on machine: (1) Remove the Rubber feet on Bottom Plate of PK-DS-170, then, use screws of 3mm diameter to connect Bottom Plate and Mounting Plate. (2) Otherwise, drill 4 holes that are bigger than 3mm diameter on Bottom Plate and use 4 piece of bigger screws to connect each other tightly. (3) Fix abovementioned 25mm-diameter Steel Pipe firmly on Inspect Machine at the distance of 300~450mm from printing film. (4) Mount the "Combined Mounting Plate" on this Steel Pipe at a proper position to observe stopped images by means of 5mm screws to tighten.